



**Bobcat**<sup>®</sup>

*One Tough Animal.*

# TURF RENOVATION EQUIPMENT

🌐 Europe



# ONE TOUGH ANIMAL

**▶ OUR MISSION**

We empower operators to accomplish more, while working in the toughest conditions and tightest situations. When our customers have the will, we provide the way.

## INTRODUCTION

**▶ BOBCAT'S HISTORY**

In 1958, Melroe Manufacturing Company introduced a compact front-end loader that evolved quickly into the M400, the world's first true skid steer loader. The company soon adopted what became the world-famous 'Bobcat' brand – and its success paved the way for the global compact equipment industry we know today.



**▶ YEARS OF EXPERIENCE**

In 2019, Bobcat expanded its portfolio by acquiring the company Ryan. This turf and lawn renovation equipment specialist has been producing high-quality machines since 1946 and has served as the industry's gold standard worldwide.



**▶ BOBCAT TODAY**

Bobcat is expanding its portfolio with the addition of turf renovation equipment, offering a complete lineup to meet all your ground maintenance needs. Known for toughness and reliability, Bobcat's turf renovation equipment is proudly made at our facility in Johnson Creek.



# SOD CUTTERS

## ► THE GOLD STANDARD

Sturdy and resilient, Bobcat Sod Cutters come in 3 different models offering cutting widths from 305 to 457 mm. The Bobcat SC18H model, equipped with a hydrostatic, variable-speed transmission, reaches cutting speeds of up to 107 m/min, ensuring efficient and precise turf removal. Choose a Bobcat sod cutter as a reliable and long-lasting solution for your sod-cutting needs.



## ► PRECISION PERFORMANCE

Achieve precision with every cut. Our sod cutters boast 1 225 oscillations per minute, a customizable cutting depth of 64 mm, and an adjustable blade angle (pitch) for outstanding cutting performance.

## ► EFFORTLESS OPERATION

Designed for user comfort, our sod cutters feature ultra-low vibration and Easy Steer technology for reduced fatigue and smooth maneuvering.

## ► ROBUST FRONT BUMPER



Our durable front bumper not only protects the engine and provides structural support but also facilitates easy lifting and transport. Equipped with built-in tie-downs, it ensures secure and stable transportation, improving the overall durability and longevity of your machine.

## ► WORK ON THE CUTTING EDGE



Crafted from 10B38 Boron-hardened steel, our blades guarantee unmatched durability. Whether you're tackling tough turf or fine-tuning intricate landscaping projects, our sod cutter's blades go the extra mile to get the job done.

## ► SIMPLIFIED OPERATION



The color-coded levers on our sod cutters enhance user-friendliness and streamline operations, making machine control a breeze for any user.



# AERATORS

## ▶ LET YOUR TURF BREATHE

Level up your turf game with Bobcat's aerators. Designed to withstand tough conditions, these aerators feature cast iron tine wheels and sturdy frames for consistent performance. Choose a compact model for residential spaces or one of our more robust solutions for large lawns and sports facilities. Our full aerator lineup caters to both professionals and lawn enthusiasts, ensuring reliable performance year after year.



## ▶ TOP PERFORMANCE

Get peak performance from our aerators, featuring a robust Honda GX120 engine with a recoil start. Capable of aerating up to 3 715 m<sup>2</sup>/h with an aerating width of up to 673 mm, these machines are designed for productivity and perfection.

## ▶ AERATION MADE EASY

Simplify aeration with our user-friendly design. Thoughtfully placed controls and our Easy Steer technology allow you to efficiently navigate paths and contours. The cast weigh bars also enable swift adjustments to pressure and weight distribution to meet your specific application needs.

## ▶ FRONT DRUM



Our front drum design is engineered to provide extra downward force, facilitating superior tine penetration. Tapered and angular, the front drum features a filler plug protection system. Driven by a reliable chain mechanism, it also offers versatility with the option to be filled with water or sand, for a more customized performance.

## ▶ DESIGNED FOR MAXIMUM IMPACT



The 70 mm long, 19 mm diameter coring tines are strategically positioned for optimal durability and penetration. Plus, you can turn your machine without disengaging the tines for a more productive and user-friendly experience.

## ▶ BUILT FOR THE DAILY GRIND



With top-notch construction and a rugged design, our machines excel in daily demanding tasks. Featuring a sturdy front bumper, they are protected against unexpected obstacles, safeguarding your investment for years to come.



# DETHATCHERS

## ▶ ELEVATE YOUR TURF CARE

Upgrade your turf care routine with Bobcat Dethatchers, offering an efficient cutting system that removes thatch for optimal lawn growth. These dethatchers come with interchangeable reels with 3 different blade options, allowing you to adapt to diverse ground conditions with ease. Enjoy hassle-free transport and a comfortable user experience with the ergonomic handle. Trust the durability and superior performance of Bobcat Dethatchers for reliable, year-after-year lawn maintenance.



## ▶ UNMATCHED PRODUCTIVITY

Stay productive with our dethatchers, featuring reliable Honda engines and a recoil start for efficient operation. Whether you prefer a walk-behind, self-propelled, or driven model, our dethatchers offer an impressive operating width of up to 486 mm and a cutting depth of up to 38 mm below ground. With interchangeable reels, you can also adapt to various turf conditions.

## ▶ SIMPLIFY YOUR TURF CARE ROUTINE

Enjoy well-placed controls, effortless reel-height adjustment, and a convenient transport mode for easy maneuvering along pathways and sidewalks. The ergonomic handle ensures a comfortable grip, while the easy-to-change reels add even more versatility.

## ▶ PRECISION AT YOUR FINGERTIPS



Easily customize reel height up to 30 cm with a simple screw mechanism. This feature simplifies adjustments and provides more precise control.

## ▶ DRIVE EXCELLENCE



Experience efficient operation with our independent drive system, where the ground drive operates separately from the reel drive. The sealed roller chain ensures minimal downtime for reliable performance, while front wheels with knob-tread tires ensure smooth navigation and superior traction.

## ▶ INTERCHANGEABLE REELS



Customize your machine for specific turf conditions with interchangeable reels. Effortlessly replace them using convenient clamp levers on both sides of the machine. Choose the flail blade for rocky ground, the fixed blade for heavy thatch removal and root cutting, or the spring tine for a gentle touch, ideal for handling small amounts of thatch or other debris.



# DETHATCHER – OVERSEEDER

## ▶ CULTIVATE SUCCESS WITH BOBCAT

Our overseeder offers heavy-duty performance, ensuring fast germination, excellent seed-to-soil contact, aeration, and overseeding. With dethatching capabilities, it seamlessly transitions between functions through the toolless exchange of flail reels, accommodating up to 5 different reel types. Covering large areas with a 51 cm working width, cover large areas and easily elevate any lawn with the powerful, self-propelled Bobcat overseeder.



## ▶ UNMATCHED PERFORMANCE

Powered by a dependable Honda GX390 engine with a recoil start, the Bobcat overseeder delivers exceptional results with a 483 mm operating width and cutting depth of up to 6 mm below ground. Maximize productivity by covering areas up to 873 m<sup>2</sup>/h with 10 x 8-point slicing blades, each with a diameter of 18 cm.

## ▶ BUILT WITH THE OPERATOR IN MIND

Designed for convenience, our overseeder features synchronized slicing blades on the reel and the disc delivery system for precise seed placement. With the highest germination rate in the industry, it provides excellent seed control, allowing for a predetermined amount per m<sup>2</sup>. Plus, seed flow stops when the reel is raised for even easier operation.

# BUILT TO LAST



## ▶ EXCELLENT RELIABILITY

Bobcat Turf Equipment's strength and durability empower you to achieve more, while its outstanding reliability ensures that customers consistently deliver, meeting deadlines and exceeding expectations. Plus, the low-maintenance design enables you to focus more on your job and less on upkeep.

# 2 YEAR WARRANTY

## ▶ WARRANTY

Bobcat develops every machine to the highest standards of quality and durability. That's why our standard warranty provides 24 months of coverage.

## ▶ EXTENSIVE DEALER NETWORK

You can rely on our network of dealers and service partners who are always ready to help you.

## ▶ BOBCAT GENUINE PARTS

Quality components delivered to our dealers guarantee that all of our equipment is built to last, withstand the toughest conditions and provide reliable performance.



# MAIN SPECIFICATIONS

## ► SOD CUTTERS

Designed to navigate the contours of various terrains, experience the legendary durability and longevity of Bobcat sod cutters.



SOD CUTTERS			
	SC12	SC18	SC18H
<b>ENGINE</b>			
Honda® Engine	Honda® GX160		
Honda® Power	3.5 kW		
Honda® Displacement	163 cc		
Honda® Fuel capacity	3.1 l		
Honda® Oil capacity	0.58 l		
<b>DRIVE</b>			
Drive	<ul style="list-style-type: none"> <li>V-belt engine to gear case</li> <li>double roller chain to blade shaft</li> <li>gears and roller chain to drive wheels</li> <li>(2) shifter clutches toggle traction drive and blade drive separately</li> </ul>		<ul style="list-style-type: none"> <li>A-section belt engine to hydrostat</li> <li>power transferred through enclosed oil lubricated gearcase</li> <li>chain reduction to the drive wheels and blade</li> </ul>
Clutch	spring-loaded belt tightener		–
Transmission	–		Hydro-Gear® BDU-10S-127TM
Gearbox	6 mm thick cast iron housing		
Forward speed	up to 2.4 kph		up to 6.4 kph
Reverse speed	–		up to 3.2 kph
<b>BLADE</b>			
Cutting width	305 mm	457 mm	
Cutting depth	adjustable up to 64 mm		
Blade speed	1 225 oscillations/min		
Depth adjustment	locking lever releases to desired depth		
<b>DIMENSIONS</b>			
Length	1 331 mm		
Width	635 mm		
Height	1 003 mm		1 022 mm
Weight	151 kg	169 kg	172 kg

# MAIN SPECIFICATIONS

## ► AERATORS

Elevate your turf maintenance with Bobcat's durable aerators, designed for reliable performance and ease of use, suitable for professionals and enthusiasts alike.



AERATORS		
	AE19	AE26
<b>ENGINE</b>		
Honda® Engine	Honda® GX120	
Honda® Power	2.4 kW	
Honda® Displacement	118 cc	
Honda® Fuel capacity	2 l	
Honda® Oil capacity	0.56 l	
<b>DRIVE</b>		
Drive	<ul style="list-style-type: none"> <li>4l section V-Belt to jackshaft</li> <li>#40 nickel-plated chain to tines &amp; drum</li> </ul>	
Clutch	belt tightener	
Gearbox	6:1 reduction	
Travel speed	up to 5.8 kph	
Aeration speed	up to 5.6 kph	
<b>TINES</b>		
Tines	19 mm diameter coring tines formed from 2 mm hollow hardened alloy steel	
Aeration width	483 mm	673 mm
Aeration depth	70 mm	
Number of tines	30	42
Aeration pattern	95 × 178 mm	
Tine engagement	Transport lift lever	
Productivity	up to 2 694 m <sup>2</sup> /hr	up to 3 176 m <sup>2</sup> /hr
Weight configuration	<ul style="list-style-type: none"> <li>(2) 8 kg removable weights</li> <li>17 l capacity water drum weighing an additional 16.3 kg at capacity</li> </ul>	<ul style="list-style-type: none"> <li>(2) 8 kg removable weights</li> <li>19.7 l capacity water drum weighing an additional 30 kg at capacity</li> </ul>
Frame	Welded 7-gauge steel 11-gauge steel tubing	
Drum	279 mm diameter water-fillable drum	
<b>DIMENSIONS</b>		
Length	1 359 mm	
Width	711 mm	902 mm
Height	1 240 mm	1 232 mm
Weight	118 kg	132 kg
Weight: water in drum	134 kg	162 kg

# MAIN SPECIFICATIONS

## DETHATCHER

Count on Bobcat's dethatcher with interchangeable reels to tackle various turf conditions with ease.



DETHATCHER		
	DT18	DT19
<b>ENGINE</b>		
Engine	Honda® GX160	Honda® GX390
Displacement	163 cc	389 cc
Fuel capacity	3.1 l	6.1 l
Oil capacity	0.58 l	1.1 l
<b>DRIVE</b>		
Drive	A-section V-belt from engine to reel	<ul style="list-style-type: none"> <li>4l-section V-belt to front wheels by gear box and sealed roller chain</li> <li>triple 3V-section V-belts engine to reel</li> </ul>
Clutch	spring-loaded belt tightener	
Gearbox	–	22:1 reduction
<b>BLADE</b>		
Flail blade reel	hardened, high-carbon steel: <ul style="list-style-type: none"> <li>3 mm blades at 25 mm spacing</li> </ul>	hardened, high-carbon steel: <ul style="list-style-type: none"> <li>3 mm blades at 25 mm spacing</li> <li>1 mm at 13 mm spacing</li> </ul>
Fixed blade reel	hardened, high-carbon steel <ul style="list-style-type: none"> <li>3 mm blades at 25 mm spacing</li> </ul>	hardened, high-carbon steel: <ul style="list-style-type: none"> <li>1 mm at 25 mm spacing</li> <li>2 mm at 25 mm spacing</li> <li>2 mm at 38 mm spacing</li> </ul>
Spring tine reel	2.76 mm at in 19 mm spacing	–
Operating width	457 mm	483 mm
Slicing depth	fixed blade: up to 6 mm below ground	
Reel speed	2 700 RPM	3 200 RPM
Reel height adjustment	micrometer screw; adjustable up to 32 mm for blade wear	
Frame	Welded 12-gauge steel	Welded 7-gauge steel
Optional Seed Box: capacity	21.5 l	–
Optional Seed Box: weight	14 kg	–
<b>DIMENSIONS</b>		
Length	1 410 mm	1 270 mm
Width	686 mm	902 mm
Height	991 mm	1 118 mm
Weight	60 kg	

# MAIN SPECIFICATIONS

## DETHATCHER – OVERSEEDER

Built to perform, Bobcat's robust overseeder with dethatching capabilities and synchronized slicing blades ensures effortless operation and excellent seed control.



DETHATCHER – OVERSEEDER	
	DT20
<b>ENGINE</b>	
Engine	Honda® GX390
Power	8.6 kW
Displacement	389 cc
Fuel capacity	6.1 l
Oil capacity	1.1 l
<b>DRIVE</b>	
Drive	<ul style="list-style-type: none"> <li>4l-section V-belt to front wheels by gear box and sealed roller chain</li> <li>triple 3V-section V-belts engine to reel</li> </ul>
Clutch	spring loaded belt tightener
Gearbox	22:1 reduction
<b>BLADE</b>	
Seeding system	Seed is dropped directly into soil slits via seed delivery tube and covered with soil by disc system
Seeding blade reel	(10) 8-point high-carbon, heat treated blades at 51 mm spacing
Seed hopper capacity	18.1 kg
Operating width	483 mm
Slicing depth	up to 6 mm below ground
Reel speed	3 200 RPM
Reel height adjustment	micrometer screw; adjustable up to 32 mm for blade wear
Optional seed box: capacity	–
Optional seed box: weight	–
Productivity	<ul style="list-style-type: none"> <li>single pass: 80%, 1 737 m<sup>2</sup>/h</li> <li>double pass: 80%, 873 m<sup>2</sup>/hr</li> </ul>
Frame	Welded 7-gauge steel
<b>DIMENSIONS</b>	
Length	1 270 mm
Width	902 mm
Height	1 118 mm
Weight	205 kg





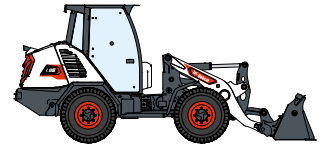
**340 MACHINES / 150 ATTACHMENT FAMILIES / 1 TOUGH ANIMAL**



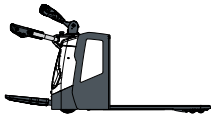
**SKID-STEER  
LOADERS**



**COMPACT TRACK  
LOADERS**



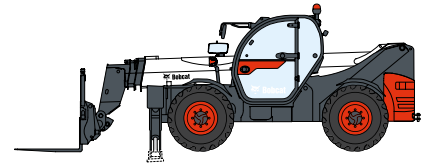
**COMPACT WHEEL  
LOADERS**



**WAREHOUSE  
EQUIPMENT**



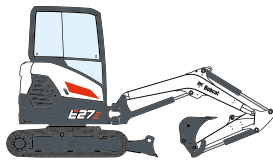
**FORKLIFTS**



**TELEHANDLERS**



**LIGHT COMPACTION  
EQUIPMENT**



**COMPACT  
EXCAVATORS**



**COMPACT  
TRACTORS**



**SMALL ARTICULATED  
LOADERS**



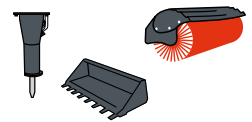
**MINI TRACK  
LOADER**



**MOWERS**



**PORTABLE  
POWER**



**ATTACHMENTS**

**DOOSAN**

Bobcat is a Doosan Company. Doosan is a global leader in construction equipment, power & water solutions, engines, and engineering proudly serving customers and communities for more than a century. | Bobcat and the Bobcat logo are registered trademarks of Bobcat Company in the United States and various other countries. ©2024 Bobcat Company. All Rights Reserved.

[www.bobcat.com](http://www.bobcat.com)

©2024 BOBCAT B4502730-EN (02-24)

Doosan Bobcat EMEA, U Kodelky 1810, 263 12 Dobříš, Czech Republic



**Bobcat**®