

Performance

Lifting height — on stabilisers	18700.0 mm
Lifting height — on tyres	18400.0 mm
Rated capacity	5000 kg
Capacity (at max. height on stabilisers)	3000 kg
Capacity (at max. height on tyres)	1500 kg
Capacity (at max. reach on stabilisers)	600 kg
Capacity (at max. reach on tyres)	300 kg
Max. reach on stabilisers	16400.0 mm
Max. reach on tyres	12500.0 mm

Weights

Weight (unladen)	16500 kg
------------------	----------

Traction

Standard tyres	18 x 22.5 in, Heavy duty
1st gear / low range	10.0 km/h
2nd gear / high range	40.0 km/h
Gradeability	21.8°

Drive System

Transmission	Hydrostatic with variable load sensing pump
Main drive	2-speed gear box

Engine

Make / Model	FPT NEF Series
Fuel	Diesel
Cooling	Liquid
Rated power (ISO 14396:2002) at 2200 RPM	141.0 HP
Rated power (ISO 14396:2002) at 2200 RPM	105.0 kW
Maximum torque at 1400 RPM	590.0 Nm
Number of cylinders	4
Displacement	4.50 L

Hydraulic System

Pump type	Double gear pump
Pump capacity	135.00 L/min
Relief valve pressure setting	230.00 bar

Cycle Times

Telescope in time at max. reach - no load	16.9 s
Telescope out time at max. reach - no load	27.8 s

Brakes

Engine braking	Hydrostatic
Parking and emergency brake	Negative brake with electro-hydraulic command on rear axle

Fluid Capacities

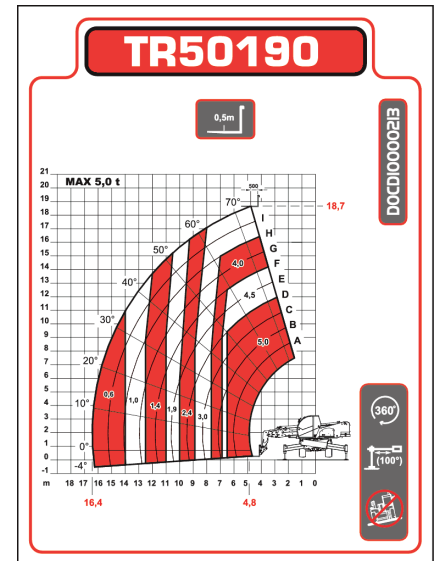
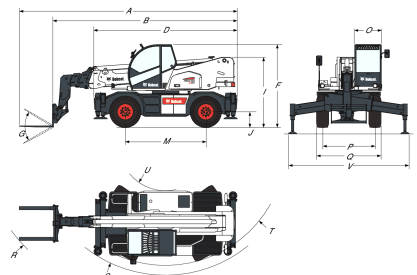
Engine oil	14.40 L
Fuel tank	180.00 L
Hydraulic reservoir	270.00 L

Environmental

Operator noise level (LpA) (EN 12053)	75 dB(A)
Level of acoustic power (LWA)	107 dB(A)
Whole body vibration (EN 13059)	1.71 ms ⁻²
Whole body vibration uncertainty (EN 13059)	0.18 ms ⁻²
Hand-arm vibration (ISO 5349-1)	1.52 ms ⁻²

Load Charts

On stabilisers, with forks, 90°


Dimensions


(A)	7960.0 mm	(O)	980.0 mm
(B)	6760.0 mm	(P)	1920.0 mm
(D)	5290.0 mm	(Q)	2380.0 mm
(F)	3020.0 mm	(R)	6410.0 mm
(G)	115.0°	(S)	4790.0 mm
(I)	2556.0 mm	(T)	4430.0 mm
(J)	360.0 mm	(U)	1700.0 mm
(M)	2950.0 mm	(V)	4800.0 mm